

GSA+

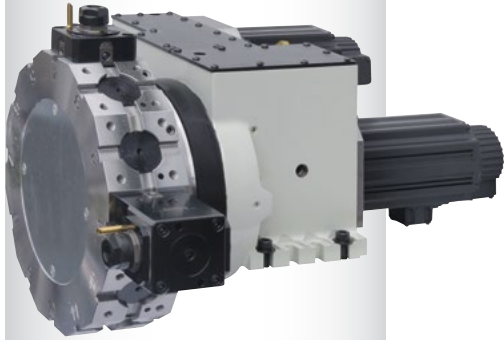
動力刀塔

Power Tooling Turret

NEW

特性 / Features:

- 動力刀具最高轉速可達 R.P.M. 5000/6000，扭力超強，適用重銑切削、鑽孔、攻牙。
 - 動力刀座的聯結器採用 DIN1809 介面。
 - 旋轉定位採用三片式離合齒及油壓鎖緊，耐用性高，適合重切削。
 - 動作快速，轉一刀位只需 0.1 秒 (相鄰刀)，定位精度 +2 秒，重覆精度 +-1 秒。
 - 動力主軸馬達可依不同控制器型號作改變，如西門子、三菱。
 - 刀盤型式採用 VDI 或 BMT，定點精度可達 0.01 mm (未裝刀座)，同心度達 0.005mm。
 - 旋轉定位與動力刀具交換時間在 1 秒內。
 - 低噪音、耐用性佳。
- Maximum speed of the power tooling can be reached 5,000/6,000 rpm with strong clamping force which is suitable for heavy cutting such as milling, drilling and tapping machining.
 - Adopting interface coupling of power tool holder with DIN 1809 type.
 - Adopting 3pcs Hirth Coupling & Hydraulic Clamping /Unclamping System suitable for heavy cutting long term operation.
 - There is need 0.1 sec. only with speedy rotation time(adjacent), Indexing accuracy: +2 sec. Accuracy of repeatability: +-1 sec.
 - Spindle Motor can be changed according to different controller model such as SIEMENS and MITSUBISHI.
 - Adopting tool disc model of VDI or BMT type, position accuracy can be reached 0.01mm (without tool holder), concentricity can be reached 0.005mm.
 - Changing time between in rotating position and power tooling within one second.
 - Low noise and high durability.



規格表 / Specification

型號 Model		CLT-80SPB	CLT-100SPB	CLT-125SPB	CLT-160SPB	CLT-200SPB
刀數 Allowed number of tools	N	12	12	12	12	12
中心高 Center height	mm	80	100	125	160	200
刀盤尺寸 Tool disc size	mm	310 350	350	350 380	430 520	520
鎖緊力 Clamping force	kgf	2646	3842	5724	8790	13900
轉一刀並鎖緊時間 Rotation and clamping	Sec.	0.54	0.72	0.7	0.9	1.23
轉最遠刀並鎖緊時間 Total indexing time for 180° (include clamping)	Sec.	0.87	1.34	1.32	1.6	1.98
油壓壓力 Hydraulic working pressure	kgf/m ²	35	35	35	35	35
流量 Flow rate	L/min	20	20	30	30	30
伺服馬達形號 Servo motor model		MITSUBISHI HG-SR52JK	MITSUBISHI HG-SR102JK	MITSUBISHI HG-SR102JK	MITSUBISHI HG-SR102JK	MITSUBISHI HG-SR81JK
齒數比 Gear ratio for rotating		24:1	45:1	45:1	45:1	24:1
馬達額定扭力 Motor stalling torque	Nm	2.4	4.8	4.8	4.8	8.1
離合齒外徑 / 型態 Diameter of coupling type	mm	Ø125 / 3pcs	Ø150 / 3pcs	Ø180 / 3pcs	Ø230 / 3pcs	Ø270 / 3pcs
主軸馬達型號 Spindle motor model		FANUC ail2-10000	FANUC ail2-10000	FANUC ail2-10000 FANUC ail 3-10000	FANUC ail6-10000 FANUC ail15-7000	FANUC ail15-7000
刀具尺寸 Tool holder shaft size		BMT45 BMT55	BMT55	BMT55 BMT65	BMT75 BMT85	BMT85
驅動離合齒 Rotating tool holder coupling		DIN 1809	DIN 1809	DIN 1809	DIN 1809	DIN 1809
齒數比 Gear ratio for power tooling		1:1	1:1	1:1	1:1	1:1
刀具最高轉速 Tool holder Max. speed	rpm	5000	5000	5000	4000 3500	3500

◆以上所列規範旭陽公司保留規格修改權力，客戶可提出需求規格另定規格協議。

◆ GSA remains the right of modification. All specifications can be modified according to customers' requirement.

